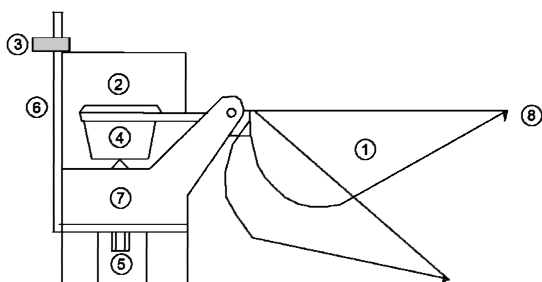


**Technical specifications**

**Rain collector/Tipping bucket**

Rain-O-Matic Small measures the precipitation by means of a funnel (orifice 50 cm<sup>2</sup>), which leads the water down into the self-emptying tipping POM bucket, held in place by a hard ferrite magnet. The magnet always exerts just enough tension to allow the measuring bucket to empty in one quick movement (less than 300 ms) and then return to its normal position, ready to once again collect precipitation. This means the counter weight always remains the same opposite to other conventional two spoons tipping bucket rain gauges.



- 1. Self-emptying bucket
- 2. PCB with reed switch
- 3. Screw to hold the entire unit
- 4. Magnet
- 5. Adjustment screw
- 6. Angle brackets
- 7. Holder for spoon
- 8. Drip catcher

**ASA**

The rain gauge made in molded thermoplastic also known as ASA, which has high outdoor weather ability.

**ASA** is extremely resistant against the sun's UV radiation, it is frost- and heat resistant, standing all climatically conditions.

The product is widely used in the automotive industry as well as several other outdoor applications.

**PCB**

The electronic printed circuit board with individually tested and high quality reed switches protected against extreme weather conditions such as extreme frost or heat. This include corrosion from salt water due to the PCB is coated with weather-resistant varnish.

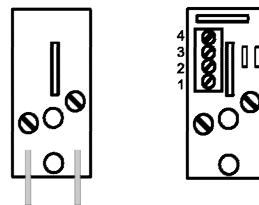
**The printed circuit board comes in two versions**

- Version 1: **Item no. 100.053 - PCB No. 9601** (NC—normally closed) has male connection and 1 reed switch

- Version 2: **Item no. 100.054 - PCB No. 9602** (NC—Normally closed, NO—Normally open). Terminal strip with 4 connections/2 outlets and

2 reed switches connected-up in series by 1 kohm and 1/4W resistor.

PCB no. 9601      PCB no. 9602

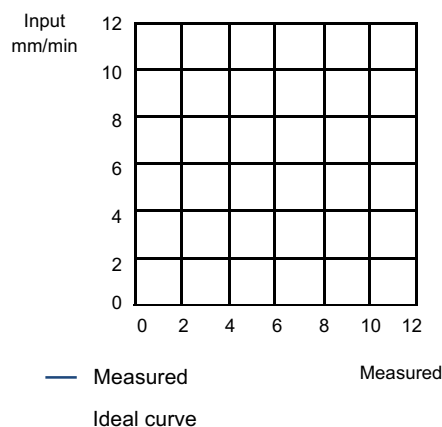


Terminal Strip	Reed Switch	0,2 mm/tip	0,25 mm/tip	0,50 mm/tip
1 - 2	Normally Closed	190 ms open	220 ms open	255 ms open
3 - 4	Normally Open	255 ms closed	225 ms closed	295 ms closed

Operating times for PCB no. 9602

**Rainfall intensity diagrams**

Intensity-curve with 1,0 mm / impulse



	Millimeter version	American version
Resolution:	1,00 mm	1/10 inch
Orifice:	50 cm <sup>2</sup>	7,75 sq. Inch
Total height:	10,0 cm	3,94 inch
Weight:	118 g	4,1 oz